

The Galaxy platform for accessible, reproducible and collaborative biomedical analyses: 2022 update

The Galaxy Community*

Received February 03, 2022; Revised March 17, 2022; Editorial Decision March 28, 2022; Accepted March 30, 2022

ABSTRACT

Galaxy is a mature, browser accessible workbench for scientific computing. It enables scientists to share, analyze and visualize their own data, with minimal technical impediments. A thriving global community continues to use, maintain and contribute to the project, with support from multiple national infrastructure providers that enable freely accessible analysis and training services. The Galaxy Training Network supports free, self-directed, virtual training with >230 integrated tutorials. Project engagement metrics have continued to grow over the last 2 years, including source code contributions, publications, software packages wrapped as tools, registered users and their daily analysis jobs, and new independent specialized servers. Key Galaxy technical developments include an improved user interface for launching large-scale analyses with many files, interactive tools for exploratory data analysis, and a complete suite of machine learning tools. Important scientific developments enabled by Galaxy include Vertebrate Genome Project (VGP) assembly workflows and global SARS-CoV-2 collaborations.

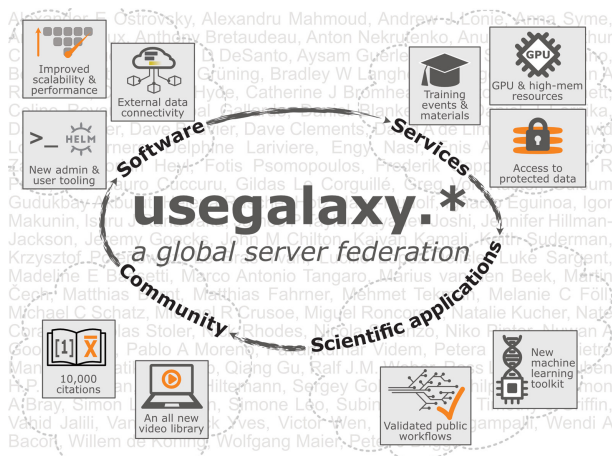
INTRODUCTION

Rapid growth in FAIR (1) data, and an expanding range of open source analysis software packages, offer rich research opportunities in data intensive fields such as genome science. Galaxy offers powerful and practical solutions for analyzing this data by providing access to extensive hardware, tools, and data that can be adopted with relatively minimal training. The open source software allows scientists to efficiently manage their own data, and to share transparent, reproducible analyses. More than 8000 popular analysis software packages have been integrated with Galaxy and their use is supported via numerous topic-based training resources. The growing breadth of tools available in Galaxy enables diverse types of analysis and because all data manipulations are performed via tools (as opposed to ad-hoc scripts or manual editing), reproducibility is ensured. Galaxy also offers an interactive workflow manager (2) that makes efficient use of compute infrastructure, and comes preloaded with access to terabytes of reference data. There is also an extensible visualization framework (<https://usegalaxy.org/visualizations>) with built-in track-based genome visualizations (<https://galaxyproject.org/learn/visualization/>), multiple types of charts (barcharts, scatterplots, line charts, etc; <https://galaxyproject.org/learn/visualization/charts/>), as well as more specialized visualization tools such as Cytoscape (3), NGL molecular visualizations (4), and geographic maps from OpenLayers.

In addition to software, the project community offers access to free computing services on large research infrastructure around the world with most prominent installations residing in Australia, Europe, and the United States. Self-hosted cloud deployments are also supported via the NHGRI AnVIL infrastructure (<https://anvilproject.org/>) (5). All the software and services are accompanied with a growing library of training materials and events (6).

Started in 2005 (7), the Galaxy project is now sustained by a strong, global community of users, educators, developers and administrators. The size of this community is continuing to grow across all areas of the Galaxy ecosystem. Highlighted in Figure 1 is the usage of the free services by the researchers while Figure 2 summarizes the categories of tools researchers use via Galaxy

GRAPHICAL ABSTRACT



*To whom correspondence should be addressed. Tel: +1 410 369 8563; Email: enis.afgan@jhu.edu
<https://galaxyproject.org/>.

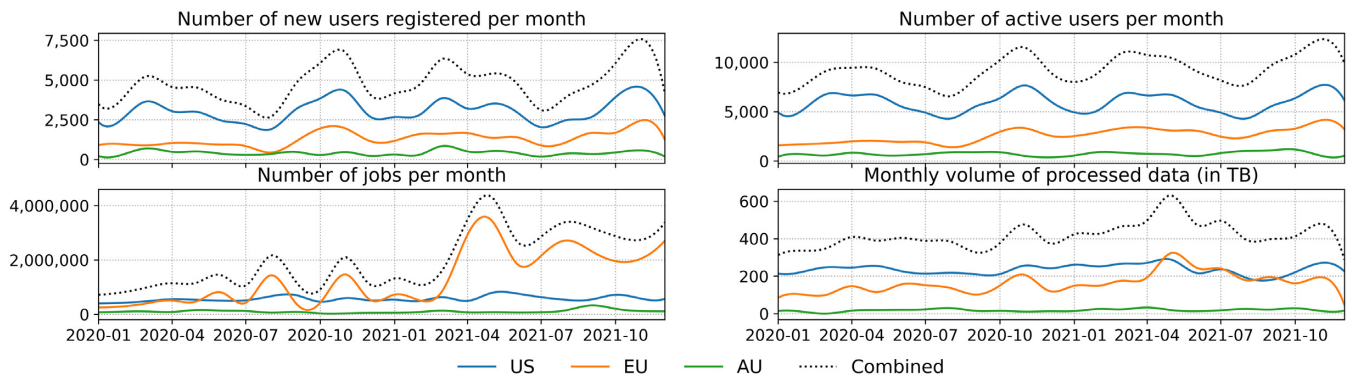


Figure 1. Usage of the usegalaxy servers in Australia (AU), Europe Union (EU) and the United States (US). Large compute infrastructure is available to anyone, for free, without any configuration and it spans the world (more below). User acquisition, user retention, and user activity are captured. A dip in usage captured at the right hand side of some diagrams is cyclical, due to the end of the calendar year. A significant increase in the number of monthly jobs in the EU is due to the start of analyzing SARS-CoV-2 data (more below).

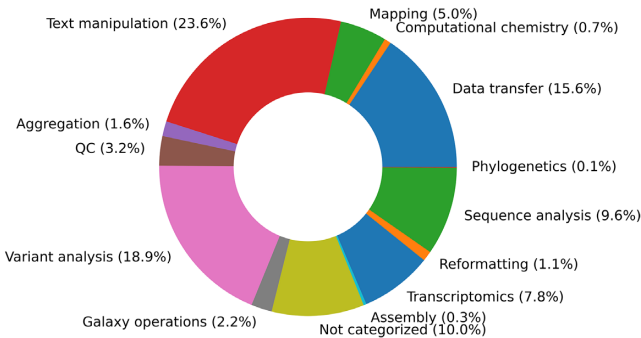


Figure 2. Categorization of the type of tools executed by users across the three most popular usegalaxy servers.

most frequently. We believe the size and diversity of this community is what sets Galaxy apart from alternative data analysis platforms. For a detailed perspective on the alternative workflow management systems and a comparison of technical features, please see Wratten *et al.* (8).

In the remainder of this paper, we provide details on some of the most relevant updates to show how the Galaxy project is growing and adapting to the changing and complicated landscape of computing in open science. As will be seen, the work reported here is only possible because multiple independent research groups and a global community of contributors collaborate efficiently to support the project (<https://galaxyproject.org/>).

NEW SOFTWARE FEATURES AND ENHANCEMENTS

Genomic data analyses are continuing to push the boundaries in terms of the size of the data generated and number of samples processed. This is coupled with an increased adoption of cloud computing services for hosting the data and more stringent restrictions on data movement. The Galaxy project has developed a number of new features to accommodate these trends.

Ability to browse external data repositories

Public and private data repositories are a growing trend for hosting, aggregating, and sharing data. Galaxy can now represent these remote data resources as a UI-browsable filesystem, which users can upload to and download from. Remote file source plugins bundled with Galaxy include AWS S3 storage service, Google Cloud Storage, Google Drive, AnVIL, and Dropbox. To add a new data source module to Galaxy, one need only find or write a client library for the desired source that implements the PyFilesystem2 interface, and configure Galaxy to provision it with appropriate user credentials.

Initial support for batch operations

Dataset collections allow the same operations, such as executing a tool or workflow, to be performed on a set of datasets. Collections have been enhanced to allow converting the datatype for all items in a collection as a batch operation. Another major development is in the rule builder, which allows data being imported into a collection to be structured based on defined rules (e.g. create a collection of dataset pairs from a list of accessions). The rule builder now also retains memory of the most recent rules that it ran, allowing users to re-run this saved rules list on a new collection of datasets.

Modernizing the framework

Since its inception, Galaxy used the Web Server Gateway Interface (WSGI) convention for its web server functionality through various low-level Python libraries. Modern best practices, however, recommend the use of features such as standard asynchronous computing framework (asyncio), type annotations (mypy), data validation (pydantic) and live documentation (OpenAPI) for increased efficiency and maintainability. To utilize these advances, Galaxy has adopted the FastAPI web framework and can now be served as an Asynchronous Server Gateway Interface (ASGI) application. This transition has resulted in a simplified development experience with auto-generated

documentation, more robust parsing of parameters, better error handling and the ability to handle more user requests with fewer server resources. Importantly, the API schema is automatically up-to-date and correct, and can be used to generate client libraries in many different programming languages. Finally, these updates provide the groundwork for interactive applications and notifications using the web-socket protocol.

An additional framework upgrade is the adoption of a message queue for long-running tasks. As the number of datasets that Galaxy must support continues to grow, it has become untenable to perform even trivial processing of such datasets in the web request-response cycle itself. We have extended Galaxy with support for Celery tasks, which allows such long-running operations to be off-loaded from the server request. Slow operations, such as deleting datasets and exporting histories, have been transitioned to this background processing model with more planned. These and other optimizations have substantially increased job throughput and provided a thousand-fold client speedup when handling dataset collections with 100 000 elements.

Workflow best practices, invocations, and reports

Galaxy's workflow editor offers powerful capabilities to formulate multi-step pipelines for analyzing thousands of samples, all from a graphical web interface. The editor has been upgraded to offer researchers automated advice for adhering to workflow development best practices. The advice includes support for automatically upgrading legacy workflow inputs to the current format, warnings about disconnected inputs, missing metadata for inputs, missing outputs, and missing license and creator metadata. Additionally, a new workflow invocation component was added that displays historic and currently executing workflow runs, while displaying input parameters, input datasets, input dataset collections, outputs, all workflow steps, jobs and subworkflows. The invocations and any changes in the history are reflected in the workflow component and vice-versa, bringing a powerful way to manage the complexity of large workflows that output many thousands of datasets. Finally, the workflow experience has been enhanced with workflow reports. Based on a reusable template, workflow reports can be used to summarize a workflow run in a structured document and downloaded as a PDF report (Figure 3).

A complete administrator's toolset

The growth of the Galaxy user community has also driven a professionalization of the Galaxy Administrator, and we teach ever larger courses to Galaxy Admins in response. This has likewise resulted in the development of numerous utilities and projects to make their lives easier. For example, `gadmin` (<https://galaxyproject.github.io/gadmin>) is a collection of commonly used SQL queries that provide infrastructure statistics for reporting and debugging. `Nebulizer` (<https://github.com/pjbriggs/nebulizer>) and `Ephemeris` (<https://github.com/galaxyproject/ephemeris>) help administrators automate tasks like importing data, installing tools, and managing users. `parsec` was cre-

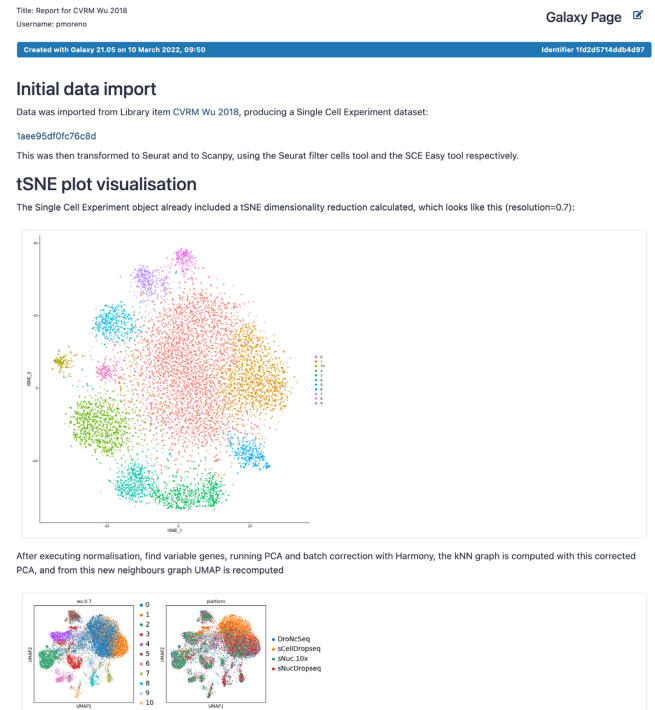


Figure 3. A sample workflow report, showing tSNE and UMAP plots of single cell expression data, automatically generated and formatted based on the outputs of a workflow.

ated to expose all of the Galaxy API as a set of command line tools that can be composed in a UNIX-like manner.

Galaxy Helm chart

We have developed a new Kubernetes Helm chart for Galaxy that abstracts the complex mechanics of deploying Galaxy into a single, highly-configurable package. The chart uses a recommended and reproducible set of technologies for deployment and management of Galaxy in development, testing or large-scale production scenarios. The chart supports versioned configuration, zero downtime upgrades, application scaling, and comes pre-configured with several hundred vetted tools, reference genomes, and monitoring dashboards.

MANAGED SERVICES FOR THE WORLD

A characteristic of Galaxy is that it comes with ‘batteries included’, meaning that in addition to the software and training materials, it supports access to powerful and instantly accessible services allowing anyone to use the software without setup or a fee. Here, we describe two new major features that continue to advance the availability of these services for training events and analysis of protected data.

Towards unification of public Galaxy servers

*Usegalaxy.** is a federation of free, public Galaxy servers that adhere to a set of common standards. There are currently several such servers (<https://galaxyproject.org/use/>),

all of which are provided and maintained by community members. Three most popular reside in Australia (AU), the European Union (EU), and the United States (US), and run on national compute infrastructures with recent advances including support for GPUs and high-memory machines. These resource advances are paving a path for novel or larger analyses using these servers as opposed to requiring groups to install and maintain their own. Another key new feature of the select usegalaxy.* servers is support for Training Infrastructure as a Service (TIaaS) (9). With TIaaS, training instructors can reserve dedicated infrastructure for a workshop through a web request form, with participants having their jobs prioritized for execution on that infrastructure. Upon completion of the event, users retain their data and analysis histories on the given server and can revisit it later. This ensures that training events are unperurbed by unpredictable server load from other users. To date, TIaaS has provided priority queue access for >285 events around the world, helping over 12 000 students learn bioinformatics and science on the Galaxy platform. Nearly 130 000 compute hours were provided to support these training events.

Galaxy service for protected and private data

One of the biggest changes in the Galaxy ecosystem is general availability of a Galaxy service for use with protected and private datasets. In the context of the NHGRI AnVIL project (5), we have implemented new capabilities that enable anyone to securely access Galaxy alongside patient records and >300 000 genomes, eliminating the need to download, store, and protect that data locally. AnVIL operates with US FedRAMP certification (10). These strengthened privacy guarantees also open a door for researchers to upload their private data to this resource. This is particularly appealing for smaller institutions that do not have the resources to build their own secure data center, and can instead launch their own instances of Galaxy within a highly scalable cloud-computing environment, broadening and democratizing accessibility of data analysis options. This solution also replaces earlier implementations of Galaxy-on-the-cloud (11).

SCIENTIFIC APPLICATIONS AND USES

We are strong believers in the ‘Eat your own dog food’ expression as a method of ensuring that the software and services built by the project truly solve real-world analysis needs. Here we highlight a few of the ongoing scientific efforts that use Galaxy and demonstrate how the above described advances facilitate adoption of Galaxy for analysis needs.

A community-curated repository of high-quality workflows

The Intergalactic Workflow Commission (IWC; <https://github.com/galaxyproject/iwc>) is a new community group that develops, collects, and improves Galaxy workflows. The workflows are maintained in an open repository as reusable components, and include such diverse topics as variant analysis of SARS-CoV-2 data and free energy calculations for molecular dynamics simulations. Anyone can

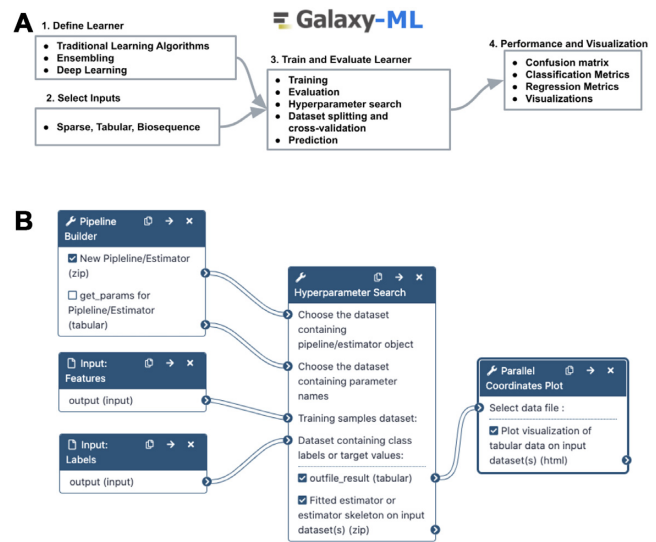


Figure 4. (A) The Galaxy-ML toolkit provides all the tools necessary to define a learner, train it, evaluate it, and visualize its performance. (B) A Galaxy workflow to create a learner using a pipeline, perform hyperparameter search and visualize the results.

contribute a workflow, which is then peer reviewed by the IWC according to pre-set guidelines. Once accepted, each workflow is continuously checked for best-practice conformance and tested during each new Galaxy release. The workflows are also automatically published to Dockstore (12) and WorkflowHub (13) and optionally synchronized to a list of Galaxy servers.

Analysis of public SARS-CoV-2 data

After nearly two years of the global COVID-19 pandemic and numerous virus strains, pathogen genomic surveillance has become an essential public service. The current knowledge about the evolutionary dynamics of SARS-CoV-2 comes primarily from genome assemblies (14). However, the availability of the read-level datasets used to build these assemblies lags behind the number of complete genome assemblies, making it impossible to confirm or investigate these genomes further, such as to further refine sequencing errors or detect potential co-infections. In addition, only a fraction of available read-level datasets are useful for transmission analysis because they lack necessary metadata (<https://galaxyproject.org/projects/covid19/samples/>). The Galaxy project now continuously ingests and analyzes high quality read-level datasets on public infrastructure, providing a platform for global pathogen monitoring (15). The workflows and data used for this monitoring is available at <https://galaxyproject.org/projects/covid19/>.

A machine learning toolkit

Galaxy-ML (16) (Figure 4) is a new toolkit for Galaxy that features a large and general-purpose suite of supervised machine learning tools. With Galaxy’s web-based user interface, an entire machine learning pipeline from normalization, feature selection, model definition, hyperparameter optimization and cross-fold evaluation can be created

and applied to large datasets using only a web browser. By leveraging analysis tools already available in Galaxy, comprehensive end-to-end analyses can be performed, beginning with primary analysis of -omics, imaging, or other large biomedical datasets and continuing to downstream machine learning tools that build and evaluate predictive machine learning models from features extracted from the primary data.

A VIBRANT GLOBAL COMMUNITY

A core strength of the Galaxy project is its bottom-up structure supported by a worldwide community of contributors. The following paragraphs outline some of their accomplishments.

JXTX: James P. Taylor foundation for open science

James Taylor, the original developer and co-founder of the Galaxy project, died unexpectedly on 2 April 2020 (17). While we may never fully recover from this shock, the project established JXTX: The James P. Taylor foundation for open science. The foundation provides support for graduate students to attend conferences in computational biology and data science to present their work and form connections with other researchers. To date, the foundation provided support to 20 students to present their work at the Cold Spring Harbor Conferences on Biological Data Science (2020) and Genome Informatics (2021). Please help us to continue provide support by donating at <https://jxtxfoundation.org/>.

10,000 publications

In 2020, the number of publications that cite the Galaxy project surpassed 10 000. The Galaxy Publication Library <https://galaxyproject.org/publication-library/> tracks publications that use, extend, implement, or reference Galaxy or Galaxy-based platforms and represents a view into the global Galaxy community. Notably, the majority of publications (59%) reference Galaxy in their methods, implying Galaxy is being used as a common tool in reaching experiment results. Researchers are increasingly using managed Galaxy services (20%, up from 15% in 2015 with local servers dropping from 12% in 2015 to 9% in 2020). Researchers have also increasingly spread their use across a growing number of public Galaxy servers: in 2020, 20% are using public servers and 10% are using usegalaxy.org, compared to 15% using each type of service in 2015. Finally, publishing in open access journals has been on the rise since 2017 (74% of publications in 2017 versus 86% in 2020) with the most popular choices in 2020 being PLOS ONE, Scientific reports, NAR, BMC Genomics and Bioinformatics.

Galaxy Training Network

Much of Galaxy is backed by the Galaxy Training Network (GTN), a strong and vibrant community centered around a central repository (<https://training.galaxyproject.org/>)

of training material spanning multiple scientific domains (6). With over 220 community members contributing content, the GTN training repository contains over 230 tutorials covering 16 scientific topics, and 6 technical topics (e.g. developer, administrator, and teacher training). In addition, the GTN organizes training events. With the ongoing SARS-CoV-2 pandemic, training events have increasingly occurred in an asynchronous, virtual setting via pre-recorded training videos that participants can work through at their own pace, with support from instructors available online. An example event was the GTN Smörgåsbord in March 2021, a 5-day 24/7 training event involving 60 instructors and 1,200 registrants from 78 countries. Since then, the community has organized additional, similar training events, including COVID-19 data analysis workshops, plant transcriptomics, machine learning, and single-cell analysis. To support this modality of training, we have also recently created the GTN video library (<https://gallantries.github.io/video-library/>).

New communities

Increasingly, special interest groups (SIGs) are forming within the Galaxy community, centered around a physical location or a scientific domain: <https://galaxyproject.org/community/>. Recent examples include formation of Galaxy India and Galaxy Arabic speaking communities, with goals of creating local expertise as well as translating Galaxy Training Materials to local languages (https://training.galaxyproject.org/training-material/news/2021/05/20/spanish_project_begins.html). SIGs have also formed around specific domains that focus on adding documentation, training, wrapping tools, and features to accommodate their use cases. Recent examples include biology-focused groups focused on cheminformatics (18), single-cell RNA-Seq (19) and public health (20) as well as climate science as an all-new domain (<https://climate.usegalaxy.eu/>).

Transparent project governance

The continuous growth and diversity of needs in the communities meant a more scalable governance model was needed. The project formed a Galaxy Steering Committee to collect the high-level views, interests, and needs of the communities. Working Groups were formed as assemblies of contributors that focus on realizing set agendas. The Executive Board is charged with overseeing project procedures and is responsible for the creation of the community roadmap involving all stakeholders. This explicit and open governance structure allows anyone to join a working group and start shaping the future of the project.

FUTURE PLANS

The growing Galaxy project community will continue to push the boundaries of data science at the level of compute infrastructure, novel models of user interaction, and large science projects. Here we highlight a few new initiatives:

Data-local computing

Galaxy manages the datasets that users analyze by storing a local copy of each dataset. Storing copies is becoming untenable as biomedical datasets grow and are distributed across local and cloud repositories. We are now working on support for data-local computing where Galaxy will only store a universally unique identifier (UUID) for a dataset and the data for a given analysis step will be fetched as required. This will reduce the resources needed for analyses and enable operating on public and private repositories.

Novel user interfaces

The Galaxy ‘history’ panel, which displays the progression of a user’s analysis in a linear succession of datasets, has remained relatively unchanged since 2006. This linear view becomes limiting as the number of datasets and analysis complexity continues to grow. We are actively creating a novel history interface that is designed to scale and gracefully handle 10 000 datasets while giving a better sense and insight into the analysis flow through graph and ‘minimap’ style modes of interaction.

Scientific partnerships

Historically, genome assembly was not broadly accessible, requiring technical expertise, high-quality data, and powerful computational resources. The Vertebrate Genome Project (VGP) aims to change this using the latest sequencing technologies and developing new assembly tools, with the goal of assembling reference genomes for all 71,657 known vertebrate species (21). Galaxy has partnered with the VGP to develop genome assembly workflows (<https://bit.ly/3KXmgWY>) that are available on free, accessible public infrastructure (6). In addition to reducing costs and increasing throughput for VGP, these workflows are universally available for any genomics researcher, ushering in a new era of reference genomes and pan-genomes. Similar partnerships are being pursued in cancer genomics, proteomics, cheminformatics, climate change (<https://galaxyproject.org/use/>).

ACKNOWLEDGEMENTS

The growth of the Galaxy project is made possible by a growing community of world-wide users, developers, system administrators, and educators. We are extremely grateful to the Texas Advanced Computing Center (TACC) for hosting <https://usegalaxy.org>, ELIXIR (the research infrastructure for life-science data) for hosting <https://usegalaxy.org.eu>, and Bioplatforms Australia and the Australian Research Data Commons for hosting <https://usegalaxy.org.au/>.

FUNDING

NIH [2U24HG006620, 3R01AI134384, 5U24HG010263, 5U24CA231877]; NSF [1445604, 1840003]; Chan-Zuckerberg Initiative for Essential Open-Source Software for Science Program; ELIXIR Implementation Studies. Funding for open access charge: NIH.

Conflict of interest statement. A.G., N.C., J.C., J.G., D.B. and A.N. have a significant financial interest in GalaxyWorks, a company that may have a commercial interest in the results of this research and technology.

REFERENCES

- Wilkinson, M.D., Dumontier, M., Aalbersberg, I.J., Appleton, G., Axton, M., Baak, A., Blomberg, N., Boiten, J.-W., da Silva Santos, L.B., Bourne, P.E. *et al.* (2016) The FAIR Guiding Principles for scientific data management and stewardship. *Sci. Data*, **3**, 160018.
- Jalili, V., Afgan, E., Gu, Q., Clements, D., Blankenberg, D., Goecks, J., Taylor, J. and Nekrutenko, A. (2020) The Galaxy platform for accessible, reproducible and collaborative biomedical analyses: 2020 update. *Nucleic Acids Res.*, **48**, W395–W402.
- Shannon, P., Markiel, A., Ozier, O., Baliga, N.S., Wang, J.T., Ramage, D., Amin, N., Schwikowski, B. and Ideker, T. (2003) Cytoscape: A Software Environment for Integrated Models of Biomolecular Interaction Networks. *Genome Res.*, **13**, 2498–2504.
- Rose, A.S., Bradley, A.R., Valasatava, Y., Duarte, J.M., Prlici, A. and Rose, P.W. (2018) NGL viewer: web-based molecular graphics for large complexes. *Bioinformatics*, **34**, 3755–3758.
- Schatz, M.C., Philippakis, A.A., Afgan, E., Banks, E., Carey, V.J., Carroll, R.J., Culotti, A., Ellrott, K., Goecks, J., Grossman, R.L. *et al.* (2022) Inverting the model of genomics data sharing with the NHGRI Genomic Data Science Analysis, Visualization, and Informatics Lab-space. *Cell Genomics*, **2**, 100085.
- Batut, B., Hiltmann, S., Bagnacani, A., Baker, D., Bhardwaj, V., Blank, C., Bretaudeau, A., Brillet-Guéguen, L., Čech, M., Chilton, J. *et al.* (2018) Community-Driven Data Analysis Training for Biology. *cells*, **6**, 752–758.
- Giardine, B., Riemer, C., Hardison, R.C., Burhans, R., Elnitski, L., Shah, P., Zhang, Y., Blankenberg, D., Albert, I., Taylor, J. *et al.* (2005) Galaxy: A platform for interactive large-scale genome analysis. *Genome Res.*, **15**, 1451–1455.
- Wratten, L., Wilm, A. and Göke, J. (2021) Reproducible, scalable, and shareable analysis pipelines with bioinformatics workflow managers. *Nat. Methods*, **18**, 1161–1168.
- Rasche, H. and Grüning, B. (2020) Training infrastructure as a service. bioRxiv doi: <https://doi.org/10.1101/2020.08.23.263509>, 24 August 2020, preprint: not peer reviewed.
- Taylor, L. (2014) FedRAMP: history and future direction. *IEEE Cloud Comput.*, **1**, 10–14.
- Afgan, E., Baker, D., Coraor, N., Goto, H., Paul, I.M., Makova, K.D., Nekrutenko, A. and Taylor, J. (2011) Harnessing cloud computing with Galaxy Cloud. *Nat. Biotechnol.*, **29**, 972–974.
- O’Connor, B.D., Yuen, D., Chung, V., Duncan, A.G., Liu, X.K., Patricia, J., Paten, B., Stein, L. and Ferretti, V. (2017) The Dockstore: enabling modular, community-focused sharing of Docker-based genomics tools and workflows. *FI1000 Res.*, **6**, 52.
- Silva, R. F.d., Pottier, L., Coleman, T., Deelman, E. and Casanova, H. (2020) WorkflowHub: Community Framework for Enabling Scientific Workflow Research and Development. In: *2020 IEEE/ACM Workflows in Support of Large-Scale Science (WORKS)*. pp. 49–56.
- Martin, D.P., Weaver, S., Tegally, H., San, J.E., Shank, S.D., Wilkinson, E., Lucaci, A.G., Giandhari, J., Naidoo, S., Pillay, Y. *et al.* (2021) The emergence and ongoing convergent evolution of the SARS-CoV-2 N501Y lineages. *Cell*, **184**, 5189–5200.
- Maier, W., Bray, S., van den Beek, M., Bouvier, D., Coraor, N., Miladi, M., Singh, B., De Argila, J.R., Baker, D., Roach, N. *et al.* (2021) Ready-to-use public infrastructure for global SARS-CoV-2 monitoring. *Nat. Biotechnol.*, **39**, 1178–1179.
- Gu, Q., Kumar, A., Bray, S., Creason, A., Khanteymoori, A., Jalili, V., Grüning, B. and Goecks, J. (2021) Galaxy-ML: an accessible, reproducible, and scalable machine learning toolkit for biomedicine. *PLOS Comput. Biol.*, **17**, e1009014.
- Nekrutenko, A. and Schatz, M.C. (2020) In memory of James Taylor: the birth of Galaxy. *Genome Biol.*, **21**, 105.
- Bray, S.A., Lucas, X., Kumar, A. and Grüning, B.A. (2020) The ChemicalToolbox: reproducible, user-friendly cheminformatics analysis on the Galaxy platform. *J. Cheminformatics*, **12**, 40.
- Moreno, P., Huang, N., Manning, J.R., Mohammed, S., Solovyev, A., Polanski, K., Bacon, W., Chazarra, R., Talavera-López, C., Doyle, M.A.

- et al.* (2021) User-friendly, scalable tools and workflows for single-cell RNA-seq analysis. *Nat. Methods*, **18**, 327–328.
20. Gangiredla, J., Rand, H., Benisatto, D., Payne, J., Strittmatter, C., Sanders, J., Wolfgang, W.J., Libuit, K., Herrick, J.B., Prarat, M. *et al.* (2021) GalaxyTrakr: a distributed analysis tool for public health whole genome sequence data accessible to non-bioinformaticians. *BMC Genomics*, **22**, 114.
21. Rhie, A., McCarthy, S.A., Fedrigo, O., Damas, J., Formenti, G., Koren, S., Uliano-Silva, M., Chow, W., Fungtammasan, A., Kim, J. *et al.* (2021) Towards complete and error-free genome assemblies of all vertebrate species. *Nature*, **592**, 737–746.

APPENDIX

Corresponding author: Enis Afgan¹⁸ (enis.afgan@jhu.edu)
Co-corresponding authors: Anton Nekrutenko²⁵ (anton@nekrut.org), Björn A Grüning³⁵ (bjorn.gruening@gmail.com), Daniel Blankenberg⁶ (dan.blankenberg@gmail.com), Jeremy Goecks²³ (goecksj@ohsu.edu), Michael C Schatz¹⁸ (mschatz@cs.jhu.edu)

Contributors (alphabetical)

Alexander E Ostrovsky¹⁸, Alexandru Mahmoud¹⁸, Andrew J Lonie³⁶, Anna Syme³⁶, Anne Fouilloux³³, Anthony Bretaudeau¹⁵, Anton Nekrutenko²⁵, Anup Kumar³⁵, Arthur C Eschenlauer³⁴, Assunta D DeSanto²⁵, Aysam Guerler¹⁸, Beatriz Serrano-Solano³⁵, Bérénice Batut³⁵, Björn A Grüning³⁵, Bradley W Langhorst²², Bridget Carr¹⁸, Bryan A Raubenolt⁶, Cameron J Hyde²⁶, Catherine J Bromhead³⁶, Christopher B Barnett²⁹, Coline Royaux²¹, Cristóbal Gallardo³⁵, Daniel Blankenberg⁶, Daniel J Fornika², Dannon Baker¹⁸, Dave Bouvier³⁵, Dave Clements¹, David A de Lima Morais³⁹, David Lopez Taberbero³⁵, Delphine Lariviere²⁵, Engy Nasr³⁵, Enis Afgan¹⁸, Federico Zambelli³⁷, Florian Heyl³⁵, Fotis Psomopoulos⁷, Frederik Coppens⁴⁰, Gareth R Price³⁸, Gianmauro Cuccuru³⁵, Gildas Le Corguillé²⁸, Greg Von Kuster²⁵, Gulsum Gudukbay Akbulut²⁵, Helena Rasche¹¹, Hotz Hans-Rudolf¹³, Ignacio Eguinoa⁴⁰, Igor Makunin²⁶, Isuru J Ranawaka¹⁷, James P Taylor¹⁸, Jayadev Joshi⁶, Jennifer Hillman-Jackson²⁵, Jeremy Goecks²³, John M Chilton²⁵, Kaivan Kamali²⁵, Keith Suderman¹⁸, Krzysztof Poterłowicz⁴, Le Bras Yvan²¹, Lucille Lopez-Delisle¹², Luke Sargent²³, Madeline E Bassetti²⁶, Marco Antonio Tangaro¹⁴, Marius van den Beek²⁵, Martin Čech¹⁶, Matthias Bernt³⁰, Matthias Fahrner³⁵, Mehmet Tekman³⁵, Melanie C Föll³⁵, Michael C Schatz¹⁸, Michael R Crusoe⁴¹, Miguel Roncoroni⁴⁰, Natalie Kucher¹⁸, Nate Coraor²⁵, Nicholas Stoler²⁵, Nick Rhodes³⁸, Nicola Soranzo⁹, Niko Pinter³⁵, Nuwan A Goonasekera³⁶, Pablo A Moreno¹⁰, Pavankumar Videm³⁵, Petera Melanie¹⁵, Pietro Mandreoli³⁷, Pratik D Jagtap³⁴, Qiang Gu²³, Ralf J.M. Weber³, Ross Lazarus²⁷, Ruben H.P. Vorderman²⁰, Saskia Hiltemann¹¹, Sergey Golitsynskiy¹⁸, Shilpa Garg¹⁹, Simon A Bray³⁵, Simon L Gladman³⁶, Simone Leo⁸, Subina P Mehta³⁴, Timothy J Griffin³⁴, Vahid Jalili⁵, Vandenbrouck Yves³¹, Victor Wen¹⁸, Vijay K Nagampalli⁶, Wendi A Bacon²⁴, Willem de Koning¹¹, Wolfgang Maier³⁵, Peter J Briggs⁴²

Affiliations

¹ Anaconda Inc., Austin, TX, USA

- ² BC Centre for Disease Control Public Health Laboratory, Vancouver, British Columbia, Canada
³ University of Birmingham, Birmingham, West Midlands, UK
⁴ University of Bradford, Bradford, West Yorkshire, UK
⁵ Broad Institute, Cambridge, MA, USA
⁶ Cleveland Clinic, Cleveland, OH, USA
⁷ Centre for Research and Technology Hellas, Thessaloniki, Greece
⁸ Center for Advanced Studies, Research, and Development in Sardinia, Pula, CA, Italy
⁹ Earlham Institute, Norwich, Norfolk, UK
¹⁰ EMBL European Bioinformatics Institute, Hinxton, Cambridgeshire, UK
¹¹ Erasmus Medical Center, Rotterdam, Netherlands
¹² Ecole Polytechnique Fédérale de Lausanne, Lausanne, Switzerland
¹³ Friedrich Miescher Institute for Biomedical Research, Basel, Switzerland
¹⁴ Institute of Biomembranes and Bioenergetics, Bari, Italy
¹⁵ National Research Institute for Agriculture, Food and Environment, Rennes, France
¹⁶ IOCB Prague, Prague, Czech Republic
¹⁷ Indiana University, Bloomington, IN, USA
¹⁸ Johns Hopkins University, Baltimore, MD, USA
¹⁹ University of Copenhagen, Copenhagen, Copenhagen, Denmark
²⁰ Leiden University Medical Center, Leiden, Netherlands
²¹ National Museum of Natural History, Concarneau, France
²² New England Biolabs, Ipswich, MA, USA
²³ Oregon Health & Science University, Portland, OR, USA
²⁴ The Open University, Milton Keynes, Buckinghamshire, UK
²⁵ Pennsylvania State University, State College, PA, USA
²⁶ Queensland Cyber Infrastructure Foundation, Brisbane, Queensland, Australia
²⁷ Galaxy Emeritus, Sydney, NSW, Australia
²⁸ Station Biologique de Roscoff, Roscoff, France
²⁹ University of Cape Town, Cape Town, Western Cape, South Africa
³⁰ Helmholtz Centre for Environmental Research, Leipzig, Germany
³¹ Université Grenoble Alpes, Grenoble, France
³² Ghent University, Ghent, Belgium
³³ University of Oslo, Oslo, Norway
³⁴ University of Minnesota, Minneapolis, MN, USA
³⁵ University of Freiburg, Freiburg, Baden-Württemberg, Germany
³⁶ University of Melbourne, Melbourne, Victoria, Australia
³⁷ University of Milan, Milan, Italy
³⁸ University of Queensland, Saint Lucia, Queensland, Australia
³⁹ Université de Sherbrooke, Sherbrooke, Quebec, Canada
⁴⁰ VIB Center for Plant Systems Biology, Ghent, Belgium
⁴¹ Vrije Universiteit Amsterdam (VU Amsterdam), Berlin, Germany
⁴² University of Manchester, Manchester, North West England, UK