

Oncogenic Ras triggers the activation of 42-kDa mitogen-activated protein kinase in extracts of quiescent *Xenopus* oocytes

(signal transduction/oncogenesis/cell cycle/cdc2/cyclins)

ELLEN K. SHIBUYA*, ANTHONY J. POLVERINO†, ERIC CHANG†, MICHAEL WIGLER†, AND JOAN V. RUDERMAN*

*Department of Anatomy and Cell Biology, Harvard Medical School, Boston, MA 02115; and †Cold Spring Harbor Laboratory, Cold Spring Harbor, NY 11724

Contributed by Michael Wigler, July 27, 1992

ABSTRACT Quiescent, full-grown *Xenopus* oocytes, which are arrested at the G₂/M border of meiosis, contain an inactive 42-kDa mitogen-activated protein kinase (p42^{MAPK}) that is activated when oocytes are stimulated to resume the meiotic cell cycle. We have made extracts from these oocytes that respond to four cell cycle activators: oncogenic [Val¹²]Ras protein, clam cyclins AΔ60 and BΔ97, and the phosphatase inhibitor okadaic acid. All four induce the tyrosine phosphorylation and activation of p42^{MAPK}. Both cyclins and okadaic acid, but not [Val¹²]Ras, also lead to activation of the endogenous cyclin B/cdc2 kinase complexes in extracts of quiescent oocytes. Using extracts prepared from cycloheximide-arrested interphase cells, we show that although p42^{MAPK} activation can occur in response to cyclin-activated cdc2, the Ras-induced activation of p42^{MAPK} occurs without intervening cdc2 activation. Neither the nononcogenic [Gly¹²]Ras nor [Val¹²,Arg¹⁸⁶]-Ras, a mutant that lacks the C-terminal consensus sequence directing prenylation and subsequent membrane association, is an effective activator of p42^{MAPK} *in vitro*.

Ras proteins are low molecular weight, membrane-associated, guanine nucleotide-binding proteins involved in signal transduction events in a wide variety of organisms (1). Mutant, activated Ras proteins, with impaired ability to hydrolyze GTP, are commonly found in malignantly transformed cells (2–7). Although Ras is required for the action of many other oncogene products and growth factors (8, 9), the function of Ras proteins in higher organisms is unclear. Virtually all mitogens and many other extracellular signals induce the rapid, transient activation of MAP kinases via phosphorylation on tyrosine and threonine residues (reviewed in refs. 10 and 11). The requirement for Ras in growth factor-induced activation of MAP kinases (8, 9, 12) and the ability of mutant, activated Ras to induce MAP kinase activation in cultured cells (8, 9, 13) suggest that Ras is a converging point for numerous signal transduction pathways. MAP kinase activation is perhaps the earliest known biochemical marker for Ras function in vertebrates.

Unlike most vertebrate somatic cells, which are arrested in G₀, *Xenopus* oocytes are arrested in prophase at the G₂/M border of meiosis. Progesterone stimulation leads to the activation of a preexisting 42-kDa MAP kinase (p42^{MAPK}) (14–16) and cyclin B/cdc2 complexes known as pre-MPF (maturation-promoting factor; reviewed in ref. 17) and resumption of the cell cycle (reviewed in refs. 18 and 19). Since injection of oncogenic Ras (20, 21) or cyclins (22–24) into oocytes can also lead to cell cycle reentry, oocytes offer a useful system in which these pathways can be analyzed. Here we show that injection of oncogenic Ras into G₂/M-arrested oocytes leads to the activation of p42^{MAPK}. We have also established a cell-free system from oocytes that maintains the

quiescent state *in vitro* while retaining the capacity to respond to cell cycle activators. This cell-free system reproduces the Ras-dependent activation of p42^{MAPK}, as well as other events that can lead to cell cycle reentry, including the cyclin-induced conversion of cyclin B/cdc2 pre-MPF complexes to active MPF.

MATERIALS AND METHODS

Construction of *Escherichia coli* Expression Vectors. PCRs (*Taq* polymerase, Perkin–Elmer) (25) were performed by Vincent Jung to generate Ha-ras genes with the desired mutations and *Bam*HI as the cloning site (underlined). The 5′ oligonucleotide used was 5′-CCCTGAGGATCCATGACGAATATAAG-3′ which created a *Bam*HI site (underlined) upstream of the initiation codon (in bold); the 3′ oligonucleotide was 5′-CCTCAGGATCCTCAGGAGAGCACA-CACTT-3′. The 3′ oligonucleotide used to mutate the membrane localization site was 5′-CCTCAGGATCCTCAGGAGAGCACACGCCTT-3′ with a point mutation (in bold) to change Cys¹⁸⁶ (CAC) to Arg (CGC). The PCR templates were derived from [Gly¹²]Ha-ras (wild type) and [Val¹²]Ha-ras cDNAs (26). These PCR products were first cloned into *ADHI* promoter-driven expression vectors for *Saccharomyces cerevisiae* (27) to confirm their biological activity (28). Expression of [Gly¹²]Ha-ras in yeast suppressed the temperature sensitivity of a strain containing the temperature-sensitive mutation *ras2^{ts}*. Expression of [Val¹²]Ha-ras conferred heat shock sensitivity on a wild-type strain and suppressed the lethality of a strain containing *cdc25^{ts}*. Finally, expression of [Val¹²,Arg¹⁸⁶]Ha-ras suppressed the heat shock sensitivity of a strain containing [Val¹⁹]RAS2 (29). The fragments were cloned into pTrcHis (Invitrogen, San Diego) and expressed as fusion proteins with N-terminal oligohistidine (30, 31).

Purification of Intact and Histidine-Tagged Fusion Proteins. Ha-Ras proteins were purified as described (32). His-tagged proteins were prepared according to ref. 31 and manufacturer's instructions (Invitrogen). The His₆-Ras proteins were solubilized in sonication buffer [10 mM Tris-HCl, pH 7.5/10 mM MgCl₂/50 mM NaCl/1 μM phenylmethanesulfonyl fluoride/20 μM leupeptin/aprotinin (2 μg/ml)/2 μM pepstatin/0.5% (wt/vol) dodecyl β-D-maltoside (Boehringer Mannheim)]. The protein was bound to Pro-Bond resin (Invitrogen) overnight at 4°C and eluted with increasing imidazole concentrations. Fractions containing His-tagged proteins, identified by immunoblotting, were dialyzed against microinjection buffer (20 mM Hepes, pH 7.4/20 mM NaCl/4 mM MgCl₂/0.5 mM 2-mercaptoethanol). His₆-Ras preparations (at least 70% pure) were concentrated using Centriprep-10 concentrators (Amicon) and stored at –70°C in microinjec-

The publication costs of this article were defrayed in part by page charge payment. This article must therefore be hereby marked "advertisement" in accordance with 18 U.S.C. §1734 solely to indicate this fact.

Abbreviations: MAP kinase, mitogen-activated protein kinase; p42^{MAPK}, 42-kDa MAP kinase; MPF, maturation-promoting factor; GVBD, germinal vesicle breakdown; MBP, myelin basic protein; CHX, cycloheximide.

tion buffer plus 40% glycerol. The purification of His₆-ERK2 from *E. coli* carrying the NTP7-5 vector was performed using identical conditions, but without dodecyl β -D-maltoside. Recombinant clam cyclins A Δ 60 and B Δ 97 were expressed and gel-purified as described (33).

Frog Oocyte Maturation Assays. Oocyte isolation, microinjection, and culture were as described (33). Oocytes were microinjected with 50 nl and germinal vesicle breakdown (GVBD) was scored by the appearance of a white spot at the animal pole. For immunoblot analysis, 4 vol of lysis buffer (0.25 M sucrose/0.1 M NaCl/2.5 mM MgCl₂/10 mM NaF/10 mM EGTA/1.0 mM Na₃VO₄/20 mM Hepes, pH 7.2) was added to 1 vol of packed oocytes (0.9 μ l per oocyte), and oocytes were homogenized by repeated passage through a plastic pipette tip. The homogenate was centrifuged at 10,000 \times *g* for 5 min and mixed with 4 vol of 2 \times sample buffer (34).

Preparation of Oocyte and Egg Extracts. Defolliculated, late stage V and VI oocytes, ≥ 1.2 mm (35), were isolated from ovaries by collagenase treatment (36, 37), rinsed twice in extraction buffer (EB: 0.25 M sucrose/0.1 M NaCl/2.5 mM MgCl₂/20 mM Hepes, pH 7.2), and then transferred to a 5-ml centrifuge tube containing EB with pepstatin, chymostatin, and leupeptin (each at 10 μ g/ml). Excess EB was removed and oocytes were crushed by centrifugation at 15,000 \times *g* for 15 min in a swinging-bucket rotor at 2°C. The supernatant between the lipid cap and packed yolk was collected and cytochalasin B was added (50 μ g/ml) before a second centrifugation under the same conditions. Aliquots were frozen in liquid nitrogen and stored at -80°C. Fresh and frozen/thawed extracts responded equally well to added proteins. Ovulated, metaphase II-arrested eggs were obtained and dejellied (38). Extracts were prepared from unactivated eggs as described for oocytes except that the EB contained 10 mM NaF (recrystallized, Sigma) and 10 mM EGTA (Sigma). To prepare cycloheximide (CHX)-arrested extracts, dejellied metaphase II-arrested eggs were incubated in 20% modified Steinberg's solution (39) with CHX (100 μ g/ml, Sigma) for 15 min, electrically activated (40), and then cultured in this solution for 45 min at 21°C. Extracts were prepared as described for oocytes.

In Vitro Assays of p42^{MAPK} Activation. Assay samples (25–60 μ l) were prepared by mixing 16 vol of extract, 1 vol of an ATP-regenerating system [20 mM ATP, 20 mM MgCl₂, 0.2 M creatine phosphate, and creatine kinase (1 mg/ml, Boehringer Mannheim) in EB], and 3 vol of EB or other additions. For assay of Ras, 5.0-mg/ml preparations were diluted with 1 vol of dilution buffer [50 mM NaCl/2 mM MgCl₂/20 mM Hepes, pH 7.4 (20)] and added to extracts at a dilution of 1:19, to yield a final concentration of 125 μ g/ml. Purified His₆-Ras proteins were subjected to a GTP-exchange reaction by mixing 1 vol of protein preparation (5.0 mg/ml) with 1 vol of exchange buffer (50 mM NaCl/1 mM dithiothreitol/10 mM EDTA/2 mM GTP/50 mM Tris·HCl, pH 7.5) and incubating at 37°C for 10 min, before addition to extracts. In addition, all Ras assays included 1 mM GTP. For assay of cyclins, samples included 3 vol of 40 mM Tris acetate, pH 7.2 with either cyclin A Δ 60 (0.15 mg/ml) or cyclin B Δ 97 (0.25 mg/ml), to yield final concentrations in extracts of 0.5 μ M and 0.9 μ M, respectively. Okadaic acid was added to a final concentration of 1.0 μ M in samples. For *in vitro* activation of His₆-ERK2, the protein was added to extracts to yield a final concentration of 150 μ g/ml. After mixing on ice, samples were incubated at 21°C and aliquots were analyzed by immunoblotting (1 vol of extract/10 vol of sample buffer) or kinase assays (1 vol of extract/10 vol of lysis buffer). Metaphase II-arrested egg extract was diluted with EB and samples were prepared in the same manner.

Immunoblotting. Immunoblotting with MAP kinase antisera (anti-ERK1 691 and 837; ref. 41), phosphotyrosine antibodies (42), and affinity-purified cdc2 antibodies was as

described (33, 43), using alkaline phosphatase-conjugated secondary antibody (Promega).

Isolation of His₆-ERK2 and Endogenous cdc2 from Extracts, and Kinase Assays. To recover His₆-ERK2 from the extracts, 10 μ l of extract was mixed with 20 μ l of EB/10 mM NaF/1 mM Na₃VO₄/120 mM imidazole and then frozen in liquid nitrogen. Pro-Bond resin was prepared as a 1:1 slurry in EB/10 mM NaF/1 mM Na₃VO₄ and 20 μ l was added to each thawed sample and mixed for 30 min at 4°C. The pelleted resin was then washed once in EB containing 0.5 M NaCl, 40 mM imidazole, 0.2% Tween 20, 0.2 mM Na₃VO₄, and 10 mM NaF; twice in the same buffer, but with 0.1 M NaCl; and finally, once in this buffer without Tween 20. The resin was suspended in 40 μ l of final wash buffer, and 5 μ l was assayed for kinase activity with myelin basic protein (MBP) as substrate. The remaining resin was pelleted and bound protein was eluted with 30 μ l of sample buffer for analysis by immunoblotting. cdc2 kinase was isolated on p13^{suc1}-Sepharose (33), using the same buffers as those used for His₆-ERK2 isolation, but without imidazole. Histone H1 kinase or MBP kinase assays of samples were done as described (43). H1 bands were excised from dried gels and immersed in Aquasol (DuPont), and ³²P incorporation was quantitated in a scintillation counter. The in-the-gel kinase assay was as described (16, 44).

RESULTS

Ras-Induced Oocyte Maturation Is Accompanied by Tyrosine Phosphorylation of p42^{MAPK}. Injection of human oncogenic [Val¹²]Ha-Ras into quiescent frog oocytes leads to resumption of the meiotic cell cycle as judged by GVBD. With the relatively low-specific-activity preparation used for Fig. 1, only the highest amount of Ras (100 ng) induced GVBD in a significant number of oocytes (40%; data not shown). To monitor the status of p42^{MAPK}, lysates were made from oocytes before or 5 hr after injection or progesterone treatment and analyzed by immunoblotting. Quiescent oocytes contained a 42-kDa protein that was recognized by MAP kinase antibodies but not by phosphotyrosine antibodies (Fig. 1). Both progesterone-matured and Ras-matured oocytes showed almost complete conversion of the p42^{MAPK} to a more slowly migrating form that was recognized by phosphotyrosine antibodies and represented, as previously shown (14, 45, 46), the active form of the enzyme. Both also showed the tyrosine dephosphorylation of a 34-kDa protein, identified here (see below) and elsewhere (47–49), as cdc2 kinase. In this system and others, tyrosine dephosphorylation of cdc2 is a reliable marker of its activation (50–55). A considerable fraction of p42^{MAPK} was tyrosine-phosphorylated even in the Ras-injected oocytes, which did not undergo GVBD. However, there was no significant tyrosine phosphorylation of cdc2 in these oocytes, suggesting that p42^{MAPK} activation neither depends on nor follows cdc2 activation.

Ras- and Cyclin-Induced Activation of p42^{MAPK} in Extracts of Quiescent Oocytes. To test if cell cycle activators could induce p42^{MAPK} activation in an extract of quiescent oocytes, a 15,000 \times *g* extract was prepared and supplemented with GTP and an ATP-regenerating system. Both p42^{MAPK} (Fig. 2A and B) and cdc2 (Fig. 2C) remained inactive for up to 4 hr of incubation at 21°C. The addition of [Val¹²]Ras induced the activation of p42^{MAPK} 2–3 hr later, as judged by the shift in its electrophoretic mobility, coincident with the appearance of both a phosphotyrosine signal at 42 kDa (Fig. 2A) and a 42-kDa-associated kinase activity toward MBP (Fig. 2B). Boiled Ras had no activity (data not shown). Although His₆-[Val¹²]Ras had activity comparable to untagged [Val¹²]Ras, nononcogenic His₆-[Gly¹²]Ras was a much less effective activator of p42^{MAPK} in oocyte extracts (Fig. 2D). His₆-[Val¹²,Arg¹⁸⁶]Ras, a mutant that cannot undergo pre-

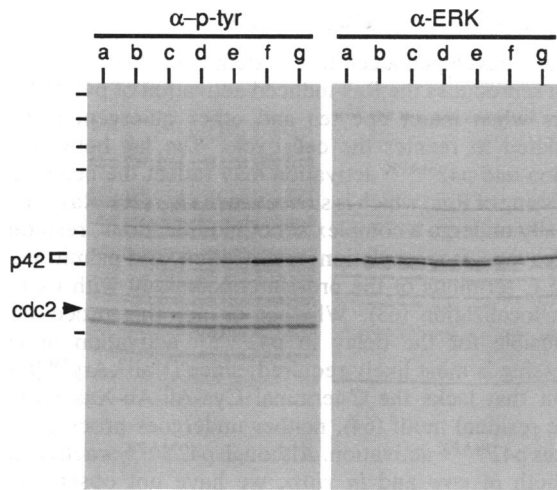


FIG. 1. Ras induces tyrosine phosphorylation of p42^{MAPK} in *Xenopus* oocytes. Immature oocytes, oocytes treated with progesterone, or oocytes incubated with or without CHX, then injected with the indicated amount of recombinant human [Val¹²]Ras protein, were collected 5 hr after injection. Untreated oocytes and oocytes injected with 25 or 50 ng of Ras all failed to undergo GVBD. The 40% of the oocytes injected with 100 ng of [Val¹²]Ras that underwent GVBD were analyzed separately from the 60% that did not. Samples were analyzed by blotting with antibodies against phosphotyrosine (α -p-tyr) (Left) or a mammalian MAP kinase (α -ERK) (Right). Molecular size markers are indicated by dashes: 220, 200, 116, 94, 56, 40, and 31 kDa. Lanes: a, Uninjected oocytes; b and c, 25 and 50 ng of [Val¹²]Ras; d, 50 ng of [Val¹²]Ras injected into CHX-treated oocytes; e, 100 ng of [Val¹²]Ras (no GVBD); f, 100 ng of [Val¹²]Ras (GVBD); g, progesterone (GVBD). p42^{MAPK} was also recognized by a second ERK antibody, 837, directed against the C terminus of the protein (data not shown) (13, 41).

ylation and membrane association, could not activate p42^{MAPK} *in vitro*.

While [Val¹²]Ras led to activation of p42^{MAPK}, it induced neither the tyrosine dephosphorylation nor the activation of cdc2 (Fig. 2C). In contrast, 1 μ M okadaic acid induced rapid activation of both p42^{MAPK} and cdc2 in oocyte extracts (Fig. 2A-C), just as in intact oocytes (56).

Both clam cyclins, A Δ 60 and B Δ 97, also led to activation of p42^{MAPK} in oocyte extracts (Fig. 3). As judged by the appearance of a phosphotyrosine signal at 42 kDa, p42^{MAPK} activation was first detected 60 min after cyclin addition. In contrast to the Ras-induced activation of p42^{MAPK}, cyclin-induced p42^{MAPK} activation was preceded by activation of cdc2 kinase (as measured by histone H1 kinase activity) and dephosphorylation of the cdc2 subunit of pre-MPF (Fig. 3).

A recombinant MAP kinase tagged with oligohistidine (His₆-ERK2) was also an effective target for Ras-induced activation. Like other recombinant MAP kinases (57-59), His₆-ERK2 showed a low level of endogenous phosphorylation. When added to the quiescent oocyte extract, it remained inactive for at least 4 hr, during which time it was dephosphorylated (Fig. 4). The addition of [Val¹²]Ras to the extracts led to moderate tyrosine phosphorylation and activation of His₆-ERK2. In oocyte extracts stimulated by okadaic acid, His₆-ERK2 was completely converted to the upper, activated form. Most strikingly, extracts of metaphase II-arrested ovulated eggs, which contain high levels of active, endogenous p42^{MAPK} and MAP kinase kinase (15, 16, 46, 60, 61), showed a very rapid activation of the added His₆-ERK2, with >50% of the protein being shifted to the upper, active form even at 4°C (Fig. 4).

Ras- and Cyclin-Induced Activation of p42^{MAPK} in Extracts of CHX-Arrested Interphase Cells. Purified MPF can lead to activation of frog p42^{MAPK}, both during oocyte maturation *in vivo* and in extracts of fertilized eggs. In contrast, injection of active p42^{MAPK} into quiescent oocytes does not lead to cdc2 activation or meiotic maturation (14, 60, 61). From these results, it has been suggested that p42^{MAPK} activation both follows and is dependent on cdc2 activation. To test this idea,

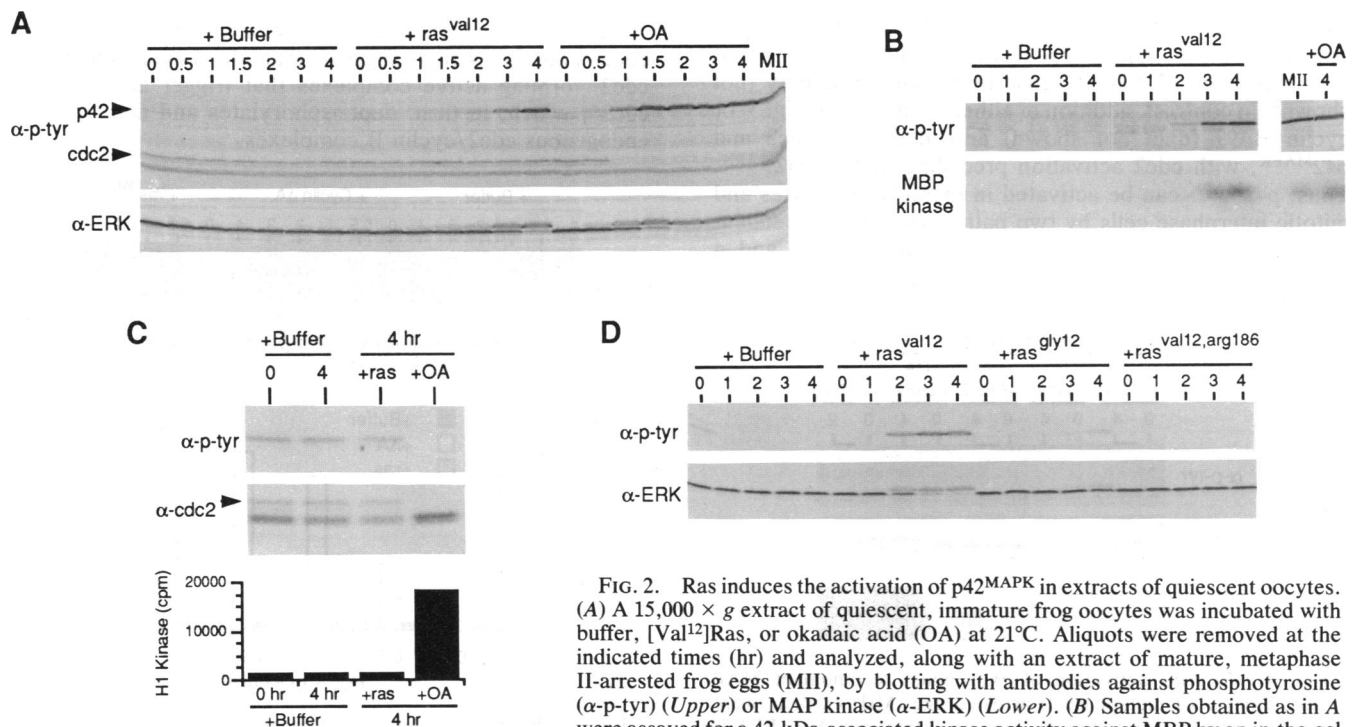


FIG. 2. Ras induces the activation of p42^{MAPK} in extracts of quiescent oocytes. (A) A 15,000 \times g extract of quiescent, immature frog oocytes was incubated with buffer, [Val¹²]Ras, or okadaic acid (OA) at 21°C. Aliquots were removed at the indicated times (hr) and analyzed, along with an extract of mature, metaphase II-arrested frog eggs (MII), by blotting with antibodies against phosphotyrosine (α -p-tyr) (Upper) or MAP kinase (α -ERK) (Lower). (B) Samples obtained as in A were assayed for a 42-kDa-associated kinase activity against MBP by an in-the-gel

assay. (C) p13^{suc1}-Sepharose-bound proteins were isolated from samples taken at 0 or 4 hr of the experiment shown in A and blotted with antibodies against phosphotyrosine (α -p-tyr) (Top) or yeast cdc2 (α -cdc2) (Middle). Arrowhead (Middle) indicates the position of the phosphotyrosine form of cdc2 shown in Top. The same samples were assayed for histone H1 kinase activity (Bottom). (D) Oocyte extracts were incubated with buffer or with Ras proteins N-terminally tagged with oligohistidine, His₆-[Val¹²]Ras, His₆-[Gly¹²]Ras, or His₆-[Val¹²,Arg¹⁸⁶]Ras, and assayed by immunoblotting as in A.

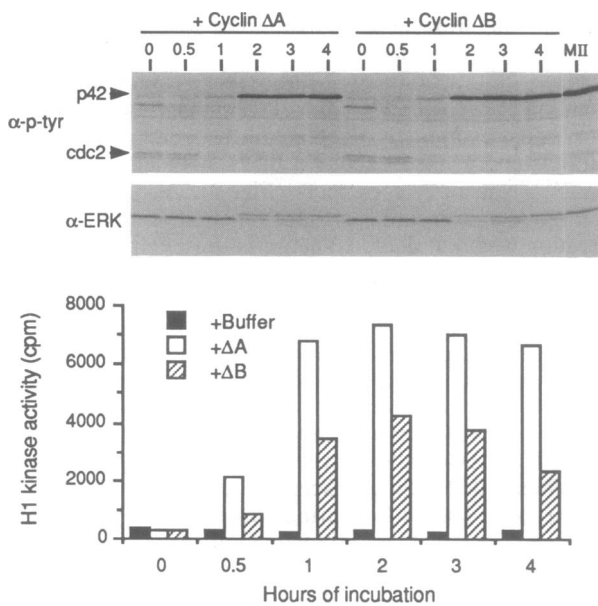


FIG. 3. Clam cyclins AΔ60 and BΔ97 induce activation of both cdc2 and p42^{MAPK} in oocyte extracts. Extracts were incubated with cyclins and samples were analyzed by blotting as in Fig. 2A with antibodies against phosphotyrosine (α-p-tyr) (Top) or MAP kinase (α-ERK) (Middle). Samples were also assayed for histone H1 kinase activity (Bottom).

we made extracts that contained inactive cdc2 (40, 55, 62). To prepare these, metaphase II-arrested eggs were treated with CHX and then electrically activated to trigger entry into interphase of the first mitotic cell cycle. At 45 min postactivation, when endogenous cyclins had been destroyed, cdc2 activity had disappeared, and new cyclin synthesis had been blocked, eggs were collected and an extract was made. The addition of His₆-[Val¹²]Ras to CHX extracts led to the activation of p42^{MAPK} in the complete absence of cdc2 activation (Fig. 5). Okadaic acid also stimulated p42^{MAPK}, but with less than a 2-fold increase in H1 kinase activity (not shown). In contrast, addition of either cyclin AΔ60 (Fig. 5) or cyclin BΔ97 (data not shown) activated both cdc2 and p42^{MAPK}, with cdc2 activation preceding that of p42^{MAPK}. Thus, p42^{MAPK} can be activated in extracts of oocytes and mitotic interphase cells by two pathways, a Ras-dependent pathway that does not require activation of cdc2 and a cyclin-activated cdc2-dependent pathway.

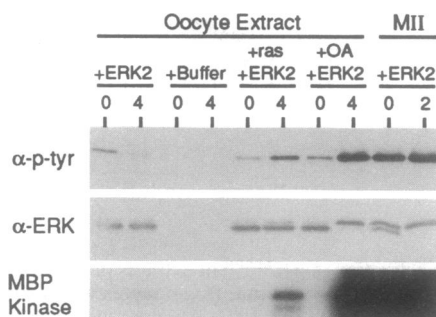


FIG. 4. *In vitro* activation of exogenous, recombinant MAP kinase. Oocyte or metaphase II-arrested egg (MII) extracts were incubated for 0 or 4 hr as follows: oocyte extract plus His₆-ERK2; oocyte extract alone; oocyte extract plus 1 μM okadaic acid (OA) and His₆-ERK2; MII extract plus His₆-ERK2. His₆-ERK2 was recovered from the lysates by binding to Pro-Bond resin and blotted with antibodies against phosphotyrosine (α-p-tyr) (Top) or MAP kinase (α-ERK) (Middle) and assayed for MBP kinase activity (Bottom).

DISCUSSION

We have developed a cell-free system from *Xenopus* oocytes which reproduces the Ras-induced activation of p42^{MAPK} that occurs when intact oocytes and other quiescent cells are stimulated to reenter the cell cycle. The lag between Ras addition and p42^{MAPK} activation may reflect the need for the processing of Ras, which is slow even *in vivo* (20). Ras proteins normally undergo a complex set of modifications, resulting in the cleavage, isoprenylation, methylation, and palmitoylation of the C terminus of the protein concomitant with its membrane localization (63). Whether or not this processing is responsible for the delay in p42^{MAPK} activation *in vitro*, processing is most likely required, since [Val¹², Arg¹⁸⁶]Ras, a mutant that lacks the C-terminal Cys-Ali-Ali-Xaa (Ali, aliphatic residue) motif (64), neither undergoes processing nor induces p42^{MAPK} activation. Although p42^{MAPK} is activated by Ras both *in vivo* and *in vitro*, we have not observed any Ras-induced cdc2 activation *in vitro*. These results show that the activation of oocyte p42^{MAPK} by Ras does not occur via cdc2 activation. Either oocyte extracts lack the capacity for Ras-induced cdc2 activation or, alternatively, activation of cdc2 by Ras *in vitro* may be much slower than that of p42^{MAPK} and, therefore, not observed during the limited time monitored in these studies.

The oocyte cell-free system also reproduces two other events that can lead to cell cycle reentry *in vivo*, activation of cdc2 by cyclins (22) and the phosphatase inhibitor okadaic acid (56). Oocytes contain cdc2, some of which is complexed with cyclin B and kept inactive by phosphorylation of cdc2 on tyrosine (reviewed in ref. 18). Hormonal stimulation induces dephosphorylation and subsequent activation of cdc2 by a homolog of the fission yeast phosphatase cdc25. Although cdc2 dephosphorylation is thought to proceed via an autocatalytic amplification loop involving cdc25 (reviewed in refs. 65 and 66), it is not clear what triggers this loop during normal, hormone-induced maturation. Our observation that cyclins induce the tyrosine dephosphorylation of endogenous cdc2 in oocyte extracts suggests that added cyclins bind free cdc2, forming active complexes that trigger activation of cdc25, which, in turn, dephosphorylates and activates the endogenous cdc2/cyclin B complexes.

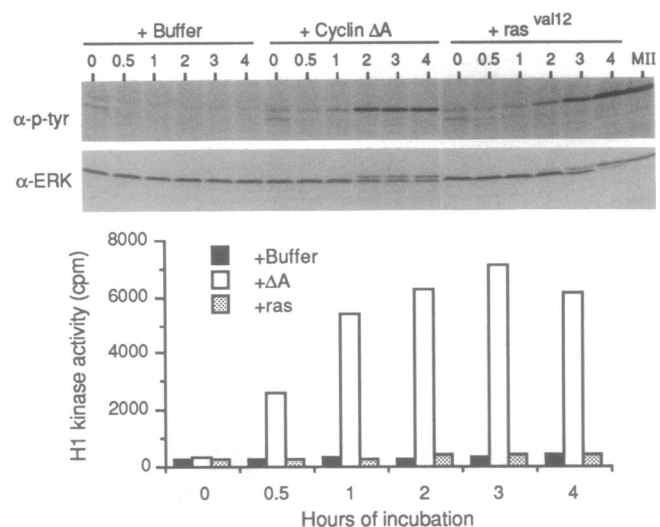


FIG. 5. Both cyclin and [Val¹²]Ras induce activation of p42^{MAPK} in extracts of CHX-arrested interphase cells. Extracts of CHX-arrested activated eggs were incubated with buffer, cyclin ΔA, or His₆-[Val¹²]Ras, and aliquots were removed at the indicated times (hr). Samples were analyzed as in Fig. 3. (Top) Anti-phosphotyrosine blot. (Middle) Anti-ERK blot. (Bottom) Histone H1 kinase activity.

The normal pathway for p42^{MAPK} activation *in vivo* is not clear. A pathway for p42^{MAPK} activation can be triggered, at least experimentally, by introduction of MPF into intact oocytes and fertilized egg extracts (14, 60, 61) or, as shown here, by the addition of purified cyclins to oocyte and embryonic extracts, yet the Ras-induced activation of p42^{MAPK} in these extracts occurs without any detectable activation of cdc2. Similarly, in G₀-arrested somatic cells, Ras-induced activation of p42^{MAPK} proceeds without any apparent involvement of cdc2, since such cells lack significant cdc2 protein or activity (67).

The establishment of a cell-free assay from vertebrate cells for Ras-induced p42^{MAPK} activation should facilitate the dissection of this pathway. Oocyte and egg extracts can be prepared in large quantities, which may allow the biochemical isolation of components of this pathway and the discovery of their functions. In addition, specific hypotheses about the roles of other proteins involved in the modulation of Ras can now be tested directly.

We thank Vincent Jung for PCRs; Frank Luca for cyclin proteins; Melanie Cobb for ERK antisera, the His₆-ERK2 construct, helpful discussions, and critical evaluation of the manuscript; and Brian Druker for phosphotyrosine antibodies. E.K.S. is a recipient of a Jane Coffin Childs Postdoctoral Fellowship. E.C. is a recipient of an Andrew Seligson Fellowship. This work was supported by National Institutes of Health Grant HD23696 (J.V.R.) and by the National Cancer Institute and the American Cancer Society (M.W.). M.W. is an American Cancer Society Research Professor.

- Barbacid, M. (1987) *Annu. Rev. Biochem.* **56**, 779–828.
- Mulcahy, L. S., Smith, M. R. & Stacey, D. W. (1985) *Nature (London)* **313**, 241–243.
- Hagag, N., Halegoua, S. & Viola, M. (1986) *Nature (London)* **319**, 680–682.
- Smith, M. R., DeGudicibus, S. J. & Stacey, D. W. (1986) *Nature (London)* **320**, 530–543.
- Feig, L. A. & Cooper, G. M. (1988) *Mol. Cell. Biol.* **8**, 3235–3243.
- Cai, H., Szerberenyi, J. & Cooper, G. M. (1990) *Mol. Cell. Biol.* **10**, 5314–5323.
- Kremer, N., D'Arcangelo, G., Thomas, S., DeMarco, M., Brugge, J. & Halegoua, S. (1991) *J. Cell Biol.* **115**, 809–819.
- Thomas, S. M., DeMarco, M., D'Arcangelo, G., Halegoua, S. & Brugge, J. S. (1992) *Cell* **68**, 1031–1040.
- Wood, K. W., Sarnecki, C., Roberts, T. M. & Blenis, J. (1992) *Cell* **68**, 1041–1050.
- Cobb, M., Boulton, T. G. & Robbins, D. J. (1991) *Cell Regul.* **2**, 965–978.
- Chao, M. V. (1992) *Cell* **68**, 995–997.
- Robbins, D. J., Cheng, E., Zhen, E., Vanderbilt, C., Feig, L. A. & Cobb, M. H. (1992) *Proc. Natl. Acad. Sci. USA* **89**, 6924–6928.
- Leevers, S. J. & Marshall, C. J. (1992) *EMBO J.* **11**, 569–574.
- Ferrell, J. E., Wu, M., Gerhart, J. C. & Martin, G. S. (1991) *Mol. Cell. Biol.* **11**, 1965–1971.
- Posada, J., Sanghera, J., Pelech, S., Abersold, R. & Cooper, J. A. (1991) *Mol. Cell. Biol.* **11**, 2517–2528.
- Gotoh, Y., Nishida, E., Matsuda, S., Shiina, N., Kosako, H., Shiokawa, K., Akiyama, T., Ohta, K. & Sakai, H. (1991) *Nature (London)* **349**, 251–254.
- Lohka, M. (1989) *J. Cell Sci.* **92**, 131–135.
- Ruderman, J., Luca, F., Shibuya, E., Gavin, K., Boulton, T. & Cobb, M. (1991) *Cold Spring Harbor Symp. Quant. Biol.* **56**, 495–501.
- Kobayashi, H., Golsteyn, R., Poon, R., Gannon, J., Minshull, J., Smith, R. & Hunt, T. (1991) *Cold Spring Harbor Symp. Quant. Biol.* **56**, 437–447.
- Birchmeier, C., Broek, D. & Wigler, M. (1985) *Cell* **43**, 615–621.
- Allende, C. C., Hinrichs, M. V., Santos, E. & Allende, J. E. (1988) *FEBS Lett.* **234**, 426–430.
- Swenson, K., Farrell, K. M. & Ruderman, J. V. (1986) *Cell* **47**, 861–870.
- Pines, J. & Hunt, T. (1987) *EMBO J.* **6**, 2987–2995.
- Westendorf, J. M., Swenson, K. I. & Ruderman, J. V. (1989) *J. Cell Biol.* **108**, 1431–1444.
- Saiki, R. K., Gelfand, D. H., Stoffel, S., Scharf, S. J., Higuchi, R., Horn, G. T., Mullis, K. B. & Erlich, H. A. (1988) *Science* **239**, 487–491.
- Fasano, O., Taparowsky, E., Fiddes, J., Wigler, M. & Goldfarb, M. (1983) *J. Mol. Appl. Genet.* **2**, 173–180.
- Toda, T., Cameron, S., Sass, P. & Wigler, M. (1988) *Genes Dev.* **2**, 517–527.
- Kataoka, T., Powers, S., Cameron, S., Fasano, O., Goldfarb, M., Broach, J. & Wigler, M. (1985) *Cell* **40**, 19–28.
- Michaeli, T., Field, J., Ballester, R., O'Neill, K. & Wigler, M. (1989) *EMBO J.* **8**, 3039–3044.
- Porath, J., Carlsson, J., Olsson, I. & Belfrage, G. (1975) *Nature (London)* **258**, 598–599.
- Janknecht, R., deMartynoff, G., Lou, J., Hipskind, R. A., Nordheim, A. & Stunnenberg, H. G. (1991) *Proc. Natl. Acad. Sci. USA* **88**, 8972–8976.
- Gross, M., Sweet, R., Yokoyama, S., Fasano, O., Goldfarb, M., Wigler, M. & Rosenberg, M. (1985) *Mol. Cell. Biol.* **5**, 1015–1024.
- Luca, F. C., Shibuya, E. K., Dohrmann, C. D. & Ruderman, J. V. (1991) *EMBO J.* **10**, 4311–4320.
- Laemmli, U. K. (1970) *Nature (London)* **227**, 680–685.
- Dumont, J. N. (1972) *J. Morphol.* **136**, 152–179.
- Krohne, G. & Franke, W. W. (1983) *Methods Enzymol.* **96**, 597–608.
- Gurdon, J. B. & Wickens, M. P. (1983) *Methods Enzymol.* **101**, 370–386.
- Shibuya, E. K. & Masui, Y. (1988) *Dev. Biol.* **129**, 253–264.
- Masui, Y. (1967) *J. Exp. Zool.* **166**, 365–375.
- Murray, A. W. & Kirschner, M. W. (1989) *Nature (London)* **339**, 275–280.
- Boulton, T. G. & Cobb, M. H. (1991) *Cell Regul.* **2**, 357–371.
- Druker, B. J., Manon, H. J. & Roberts, T. M. (1989) *N. Engl. J. Med.* **321**, 1383–1389.
- Shibuya, E. K., Boulton, T. G., Cobb, M. H. & Ruderman, J. V. (1992) *EMBO J.*, in press.
- Kameshita, I. & Fujisawa, H. (1989) *Anal. Biochem.* **183**, 139–143.
- Cooper, J. A. (1989) *Mol. Cell. Biol.* **9**, 3143–3147.
- Posada, J. & Cooper, J. A. (1992) *Science* **255**, 212–215.
- Lohka, M. J., Hayes, M. K. & Maller, J. L. (1988) *Proc. Natl. Acad. Sci. USA* **85**, 3009–3013.
- Dunphy, W. G., Brizuela, L., Beach, D. & Newport, J. (1988) *Cell* **54**, 423–431.
- Gautier, J., Norbury, C., Lohka, M., Nurse, P. & Maller, J. (1988) *Cell* **54**, 433–439.
- Draetta, G., Piwnicka, W. H., Morrison, D., Druker, B., Roberts, T. & Beach, D. (1988) *Nature (London)* **336**, 738–744.
- Gautier, J., Matsukawa, T., Nurse, P. & Maller, J. (1989) *Nature (London)* **339**, 626–629.
- Gould, K. L. & Nurse, P. (1989) *Nature (London)* **342**, 39–45.
- Dunphy, W. & Newport, J. (1989) *Cell* **58**, 181–191.
- Pondaven, P., Meijer, L. & Beach, D. (1990) *Genes Dev.* **4**, 9–17.
- Solomon, M. J., Glotzer, M. J., Lee, T., Philippe, M. & Kirschner, M. W. (1990) *Cell* **63**, 1013–1024.
- Jessus, C., Rime, H., Haccard, O., Van Lint, J., Goris, J., Merlevede, W. & Ozon, R. (1991) *Development* **111**, 813–820.
- Seger, R., Ahn, N. G., Boulton, T. G., Yancopoulos, G. D., Panayotatos, N., Radziejewska, E., Ericsson, L., Bratlien, R. L., Cobb, M. H. & Krebs, E. G. (1991) *Proc. Natl. Acad. Sci. USA* **88**, 6142–6146.
- Crews, C. M., Alessandrini, A. & Erikson, R. L. (1991) *Proc. Natl. Acad. Sci. USA* **88**, 8845–8849.
- Wu, J., Rossomando, A. J., Her, J.-H., Del Vecchio, R., Weber, M. J. & Sturgill, T. W. (1991) *Proc. Natl. Acad. Sci. USA* **88**, 9508–9512.
- Gotoh, Y., Moriyama, K., Matsuda, S., Okumura, E., Kishimoto, T., Kawasaki, H., Suzuki, K. & Nishida, E. (1991) *EMBO J.* **10**, 2661–2668.
- Matsuda, S., Kosako, H., Takenaka, K., Moriyama, K., Sakai, H., Akiyama, T., Gotoh, Y. & Nishida, G. (1992) *EMBO J.* **11**, 973–982.
- Roy, L., Swenson, K. I., Walker, D. H., Gabrielli, B. G., Li, R. S., Piwnicka-Worms, H. & Maller, J. L. (1991) *J. Cell Biol.* **113**, 507–514.
- Der, C. & Cox, A. (1991) *Cancer Cells* **3**, 331–340.
- Willumsen, B. M., Christensen, A., Hubbert, N. L., Papageorge, A. G. & Lowy, D. R. (1984) *Nature (London)* **310**, 583–586.
- Dunphy, W. G. & Kumagai, A. (1991) *Cell* **67**, 189–196.
- Gautier, J., Solomon, M. J., Boohar, R. N., Bazan, J. F. & Kirschner, M. W. (1991) *Cell* **67**, 197–211.
- Lee, M. G., Norbury, C. J., Spurr, N. K. & Nurse, P. (1988) *Nature (London)* **333**, 676–679.